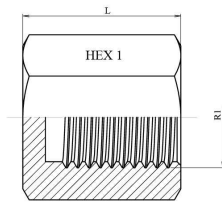
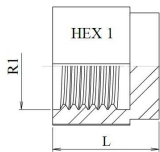
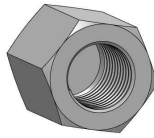
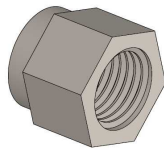


**BSP fixed cap**

Carbon steel

**1/1****A****B**

| Part n°        | R1        | L    | HEX 1 |
|----------------|-----------|------|-------|
| <b>A107202</b> | 1/8" BSP  | 15   | 14    |
| <b>A107204</b> | 1/4" BSP  | 21   | 19    |
| <b>A107206</b> | 3/8" BSP  | 24   | 22*   |
| <b>A107208</b> | 1/2" BSP  | 25   | 27    |
| <b>A107212</b> | 3/4" BSP  | 26,5 | 32*   |
| <b>A107216</b> | 1" BSP    | 28,5 | 41    |
| <b>A107220</b> | 1"1/4 BSP | 32   | 50    |
| <b>A107224</b> | 1"1/2 BSP | 40   | 55    |
| <b>A107232</b> | 2" BSP    | 40   | 70    |

\* CAN BE SUPPLIED WITH DESIGN B.